



802.11b+g Wireless USB Adapter

QUICK START-UP GUIDE

www.unicomlink.com

pn: WEP-45020G-1

UNIDOC 110207

1 BOX CONTENTS



Wireless LAN Adapter



Quick Start Guide



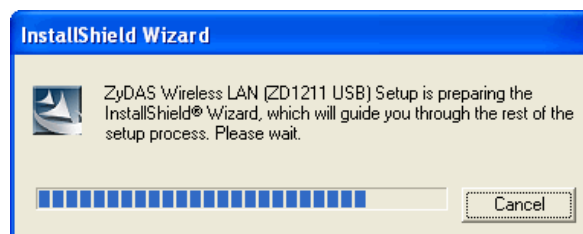
Driver CD

2 INSTALL DRIVER / UTILITY

The Installation and Driver CD will automatically activate the autorun installation program after you insert the disk into your CD drive.

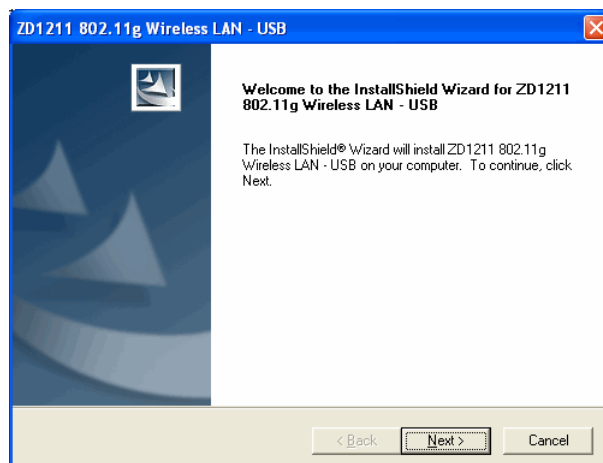
Step 1 :

Insert the Installation and Driver CD into your CD-ROM.



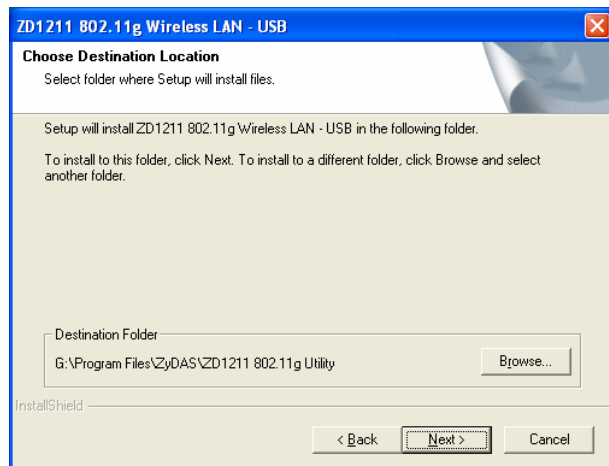
Step 2 :

Click **Next** to continue.



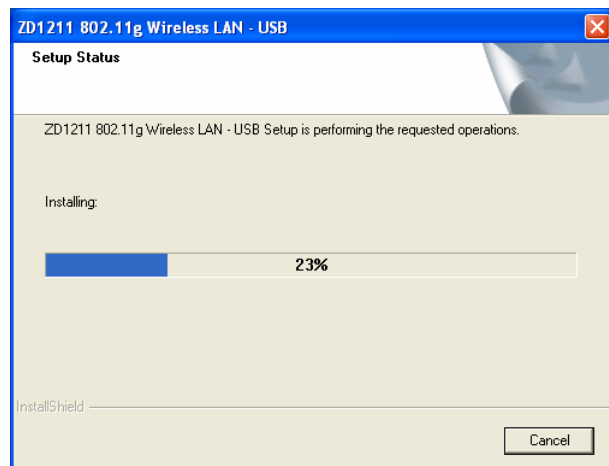
Step 3 :

Click **Next** to install into the designated folder. Or, click "Browse" to select a different folder.



Step 4 :

Files will be copied until installation is complete.



Step 5 :

Click **Finish** to complete installation.

Step 6 :

Once the driver and utility are installed on your system, plug the USB adapter into the USB port of your PC. Windows XP/2000 will automatically detect the USB Adapter.



3

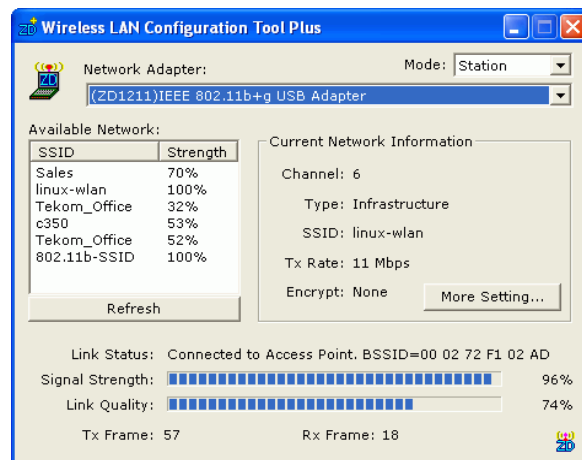
WIRELESS NETWORK CONFIGURATION

Unicom's WLAN USB Adapter uses its own management software. All functions controlled by users are provided by this application. When you insert the USB Adapter into the USB port of a PC, a new icon should appear in the Windows System Tray automatically.



If the icon is in red, this means that WLAN USB Adapter configuration is invalid or incomplete. Double click on that icon and the configuration window will pop up as shown below. It shows the SSID of available networks. Once a network is chosen, the signal strength and link quality are displayed.

The Link Quality and Signal Strength bar chart is only active when the node is in Infrastructure Mode. The bar graph displays the quality and strength of the link between the node and its Access Point. Link Quality is a measurement of reception and transmission performance over radio waves.



Tx/Rx Frame displays the instantaneous wireless Transmit and Receive throughput in bytes per second. These values are updated every two seconds.

The Configuration Tool contains several fields where operating parameters of the driver can be viewed or changed. Changes to any of the parameters in this panel can be applied to the driver without a need to restart the computer



Please refer to User's Manual in CD for more detail.

4

INSTALL VISTA DRIVER

1. The Installation and Driver CD will automatically activate the autorun installation program after you insert the disk into your CD drive. Please refer to page 2, "INSTALL DRIVER/UTILITY"
2. To install manually:

Plug your USB Adapter into your computer. Windows Vista will search for a compatible driver to install.

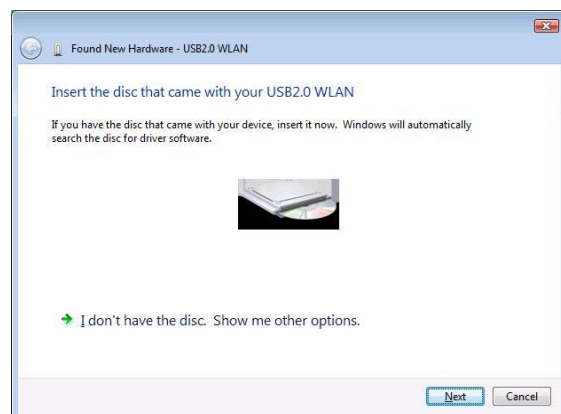
Step 1:

Select "Locate and install the driver software". Windows will guide you through the process of installing the driver software for your device.



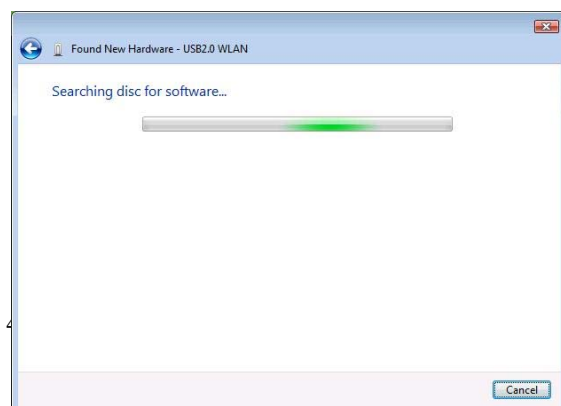
Step 2:

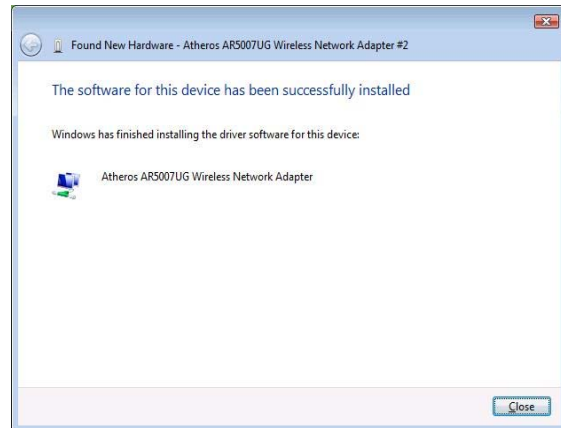
Insert the installation disc into the CD-ROM and click "next" to continue installation.



Step 3:

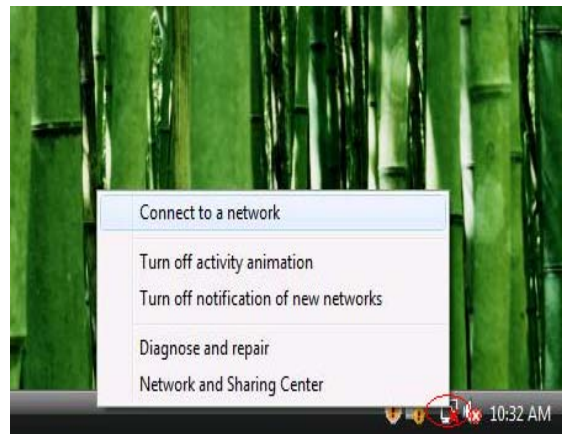
Windows Vista will search for the software and it will be installed successfully. *See figure below.*





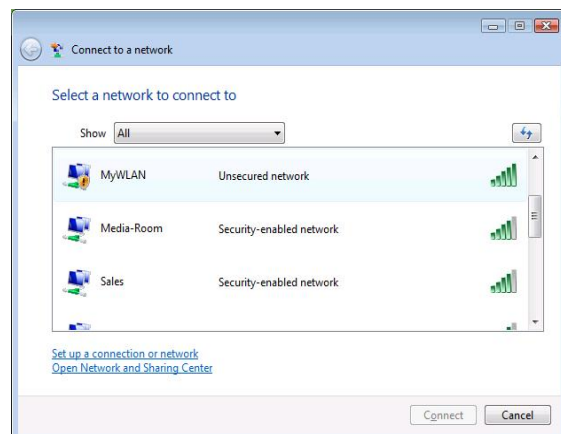
Step 4 :

After installation, right click the network icon on the Windows Vista System Tray and click "Connect to a network".



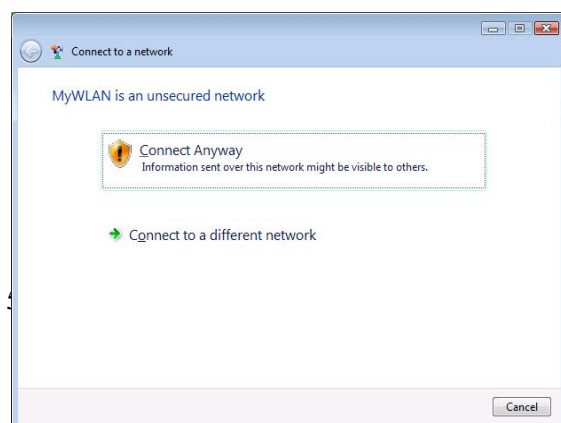
Step 5 :

Select a network to connect to and click "Connect".



Step 6 :

Select "Connect Anyway" if the network is an unsecured network.



Step 7:

Congratulations! Your USB Adapter is successfully connected to network. Click "Close".

